

The background of the image features three models standing against a solid red wall. The model on the left is a man wearing a dark cowboy hat, a light blue denim jacket over a white shirt, and a brown belt with a large buckle. The model in the center is a man with a beard wearing a brown cowboy hat, a red and white patterned poncho, and blue jeans. The model on the right is a woman wearing a light-colored cowboy hat, a blue denim shirt, and blue jeans. The text 'STUD+' is overlaid in the center, with 'STUD' in white and '+' in a light yellow color.

STUD+

MODEL PROJECT

MASC • TRANS • NONBINARY • TOMBOYS

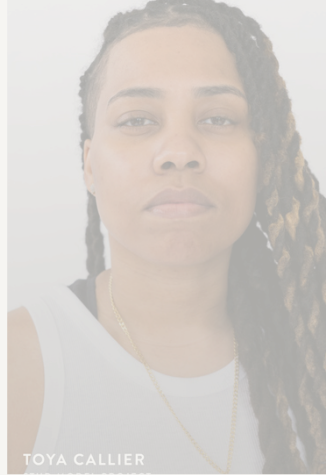
ATLANTA | NEW YORK | LOS ANGELES
LONDON | CAPE TOWN



JAYZALE MOSS
STUD MODEL PROJECT



VAN BAILEY
STUD MODEL PROJECT



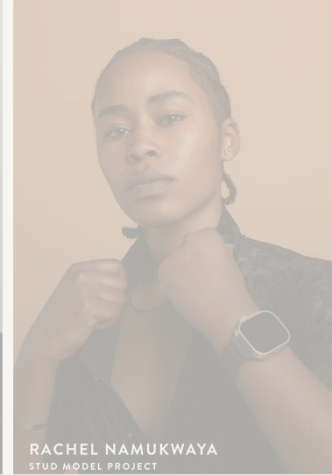
TOYA CALLIER
STUD MODEL PROJECT



SHAWN HAREWOOD
STUD MODEL PROJECT



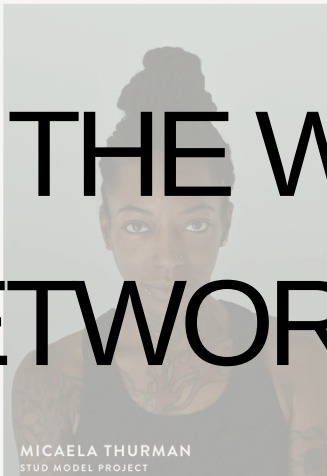
REESE PATILLO
STUD MODEL PROJECT



RACHEL NAMUKWAYA
STUD MODEL PROJECT



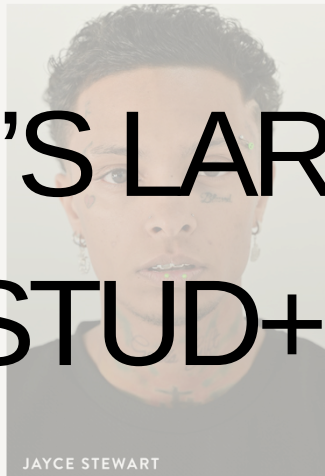
MIYAH HARRIS
STUD MODEL PROJECT



MICAELA THURMAN
STUD MODEL PROJECT



LOVE SPENCER
STUD MODEL PROJECT



JAYCE STEWART
STUD MODEL PROJECT



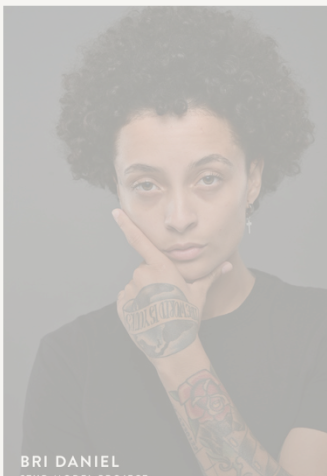
DELANEY MULROY
STUD MODEL PROJECT



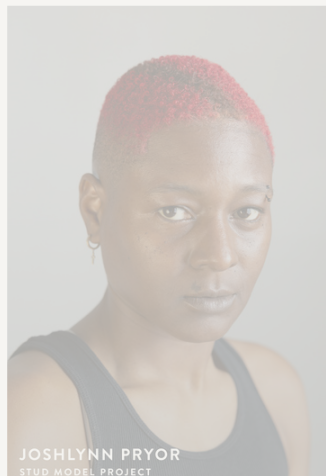
ALYSIA JOUBERT
STUD MODEL PROJECT



ABRIEL BROWN
STUD MODEL PROJECT



BRI DANIEL
STUD MODEL PROJECT



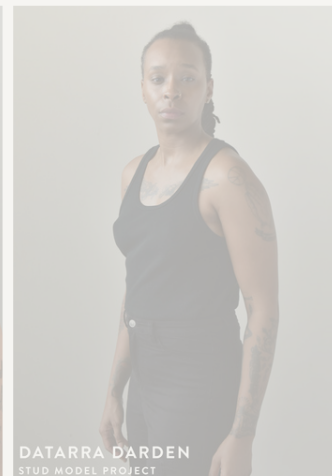
JOSHLYNN PRYOR
STUD MODEL PROJECT



LEXX LAURAY
STUD MODEL PROJECT



LYRIKAL CHERRY
STUD MODEL PROJECT



DATARRA DARDEN
STUD MODEL PROJECT

THE WORLD'S LARGEST NETWORK OF STUD+ MODELS

OUR VISION

To be the most trusted global source for booking masc-of-center talent—Masculine Presenting Women, Trans, Nonbinary, and Tomboy creatives—delivering authentic representation and consistently bookable, campaign-ready professionals across fashion, media, and entertainment.

OUR MISSION

We connect brands and productions with exceptional masc-of-center talent and make booking simple, fast, and reliable. Through development, portfolio-building, and industry readiness standards, we prepare our talent to deliver on set, while helping clients create inclusive campaigns that feel real, respectful, and culturally accurate.

OUR VALUE

Authenticity: We represent talent as they are—**real identity, real style, real presence**—so campaigns connect with real communities.

Inclusion: We champion masc-of-center visibility across gender identity, race, body type, and background, and we prioritize respectful, affirming working environments.

Professional Excellence: We hold high standards for preparedness, communication, and on-set performance, so clients can book with confidence.

Empowerment Through Readiness: We invest in training, coaching, and portfolio development so our talent is not only seen, but consistently hired and paid.

Industry Impact: We partner with brands to move representation beyond trends, and building long-term, equitable opportunities for masc-of-center creatives.



A portrait of Managing Director Teresa M. She is a Black woman with short, bleached blonde hair, wearing large gold hoop earrings and a vibrant, geometric patterned top in red, yellow, and black. She is looking directly at the camera with a calm expression. The background is a blurred outdoor setting with greenery and a red structure.

Managing Director Teresa M.

THE WHY...

We exist because authentic representation remains underdelivered in fashion, entertainment, and brand storytelling. Masc-of-center talent—Masculine Presenting Women, Trans, Nonbinary, and Tomboy creatives—are still too often overlooked, narrowly cast, or asked to fit narratives that don't reflect who they are.

Representation isn't a moment; it shapes culture, influences consumer trust, and signals who a brand is truly speaking to. When casting and creative decisions are made with intention, inclusion becomes more than a statement, it becomes visible, measurable, and credible.

Stud+ Model Project was built to help brands do this work well. We develop and represent bookable masc-of-center talent and connect them to paid opportunities, making it easier for clients to cast confidently, collaborate respectfully, and deliver campaigns that feel authentic, while contributing to a more equitable industry.

THE WHO...

Stud+ Model Project is an Atlanta-based boutique mother agency representing masc-of-center talent—Masculine Presenting Women, trans masculine, and nonbinary creatives. We develop, manage, and place exceptional models and talent for bookings across the U.S. and internationally, supporting campaigns, productions, events, and creator-led content with a professional, client-ready roster.

We combine talent development with agency-level booking support, making it easy for brands to source authentic representation while maintaining high standards for preparedness, communication, and on-set performance.

The Stud+ Society is our nonprofit community foundation created to support and expand opportunities for Stud+ individuals worldwide. With 3,000+ members globally, it provides a trusted space for connection, education, and empowerment through programming such as workshops, community initiatives, and charitable events—strengthening the pipeline of talent and reinforcing our long-term commitment to equity in the industry.





WHAT THEY ARE SAYING...

*“Joining Stud+ Model Project has been a transformative experience for me. As a masculine-presenting model, I’ve often struggled to find spaces where my identity and talent are fully embraced. SMP not only provided me with the tools to develop my portfolio and refine my skills but also connected me with opportunities I never thought possible. The support, training, and community here are unmatched. I finally feel seen, valued, and empowered to chase my dreams.” — **SMP Model***

*“Working with Stud+ Model Project has been a game-changer for our brand. Their roster of talent is both diverse and professional, bringing authenticity and creativity to every campaign. What stood out most was their commitment to ensuring seamless collaboration and their ability to connect us with models who truly embodied our values. SMP doesn’t just meet expectations, they exceed them, and their impact on our project was undeniable.” — **Brand Client***

“Stud+ Model Project partners with brands to deliver authentic, *masc-of-center* representation—developing exceptional talent and helping ensure diversity is reflected with integrity, consistency, and impact.”



THE TALENTS

Stud+ Model Project represents masc-of-center talent—**Masculine Presenting Women, Trans men, Nonbinary, and Tomboy creatives—across all sizes, backgrounds, and ethnicities, ages 13–80.** Our roster is built for brands and productions seeking authentic representation with professional, booking-ready talent.

To support reliable outcomes for clients, we operate with clear booking-ready standards across our roster and a fast shortlist turnaround—so casting is efficient, communication is consistent, and productions stay on schedule.

OUR TALENT INCLUDES:

Runway & Editorial Models: Confident, high-impact talent for fashion weeks, designer presentations, lookbooks, and publications.

Commercial & Lifestyle Talent: Relatable, camera-ready talent for advertising, e-commerce, and brand storytelling across industries.

Digital Creators & Influencers (UGC + Campaign): Creators who connect culture to conversion—supporting content needs from UGC deliverables to full-scale campaigns.

Actors, Entertainers & Background Talent: Distinct presence and authentic perspective for film, TV, live events, and experiential productions.

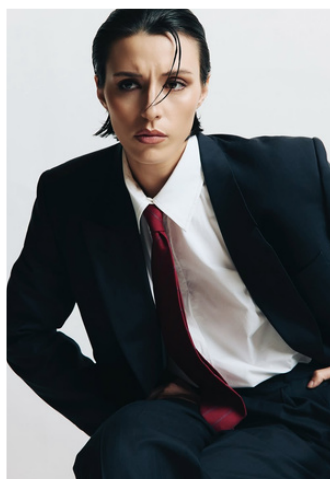


CLIENTS & COLLABS

Stud+ Model Project talent has partnered with brands, agencies, and productions across industries—supporting commercials, print and digital campaigns, e-commerce, social content, film/TV, experiential events, and runway. From global launches to independent creative projects, we bring professionalism, reliability, and authentic representation to every collaboration.

We make booking straightforward with clear talent standards and efficient shortlist turnaround, helping clients cast confidently and deliver work that resonates with real audiences.







WHY STUD+ MODEL PROJECT?

Stud+ Model Project helps brands and productions cast authentic masc-of-center talent with confidence. We combine a clear point of view on representation with professional, booking-ready standards, ensuring every project is supported by talent who shows up prepared, communicates well, and delivers on set.

Because we actively develop emerging talent within our ecosystem, clients gain access to both standout faces and a strong, growing pipeline. With a global community of 3,000+ prospective talents, we can source the right fit for your brief, whether you need runway presence, commercial relatability, creator-led content, or on-camera performance.

Partner with Stud+ Model Project to bring fresh perspective to your creative, without compromising on quality, efficiency, or execution.

AUTHENTICITY MATTERS

Partnering with Stud+ Model Project connects your brand with masc-of-center talent— Masculine Presenting Women, trans masculine, Nonbinary, and Tomboy creatives —an influential and growing audience shaping culture, trends, and purchasing decisions.

Our talent brings authenticity and cultural relevance to campaigns, helping brands connect with audiences in a way that feels real, respectful, and current. The result is content with stronger resonance and greater trust because representation is not only about visibility, it's about accuracy and intent.

When you work with Stud+ Model Project, you're not just checking a box, you're investing in storytelling that reflects the world as it is today, while positioning your brand to lead with inclusion in a credible, lasting way.



DIVERSITY BEHIND THE SCENES

Stud+ Model Project supports diversity both in front of and behind the camera. Our extended creative network—including photographers, videographers, creative directors, stylists, set designers, and beauty professionals—brings craft, cultural awareness, and authenticity to every project.

When requested, we also provide creative consultancy to help teams approach representation with clarity and care, from inclusive casting guidance and on-set best practices to reviewing language, policies, or creative direction for cultural sensitivity and alignment.

With Stud+ Model Project, you're not only producing strong work, you're building campaigns that reflect real communities and create a professional, respectful experience for everyone involved.





OTHER SERVICES

- **Model Development & Management:** Ongoing development to strengthen posing, on-camera performance, runway presence, and brand readiness, so talent is prepared to deliver consistently across bookings.
- **Talent Placement & Booking:** Agency-led representation and booking support for fashion, beauty, lifestyle, commercial, experiential, and entertainment projects—streamlined from brief to shortlist to confirmation.
- **Creative & Production Support:** Photoshoots and content production supported by a trusted network of photographers, videographers, MUA artists, stylists, and studios—available as an add-on to talent bookings when needed.
- **Brand Partnerships & Campaign Alignment:** Consultation to match the right talent to your campaign goals, audience, and creative direction—ensuring representation is authentic and execution is on-brand.
- **Casting Services & Event Support:** Casting coordination for runway shows, commercial shoots, experiential events, and influencer/creator campaigns, including scheduling, holds, and day-of support as required.
- **Digital & Social Content Solutions (UGC + Campaign):** Creator-led content designed for performance across platforms—supporting everything from UGC deliverables to full campaign content needs.
- **Talent + Client Collaboration Management:** Clear communication, expectations, and coordination across talent, brand teams, and production partners to support a smooth, professional experience end-to-end.



GLOSSORY

- **AFAB / AMAB:** Assigned female/male at birth (doesn't define gender identity).
- **Asexual:** Little/no sexual attraction; varies by person.
- **BIPOC:** Black, Indigenous, and People of Color.
- **Bisexual:** Attraction to two or more genders.
- **Cisgender:** Gender matches sex assigned at birth.
- **Gay:** Often men attracted to men; sometimes used more broadly in queer spaces.
- **Genderqueer:** Gender outside the binary.
- **Intersex:** Natural variations in sex traits/chromosomes/hormones.
- **Lesbian:** Women attracted to women; can include some nonbinary/trans people.
- **LGBTQIA+:** Umbrella for diverse sexual orientations and gender identities.
- **MOC / Masc:** Masculine of Centered often queer women, lesbians, or non-binary people.
- **Nonbinary:** Gender not exclusively male or female.
- **Pansexual:** Attraction regardless of gender.
- **Pronouns:** Words like she/he/they; use what someone asks for.
- **Stud:** Black masculine-presenting lesbian identity rooted in Black queer culture.
- **Tomboy:** Girl/woman with traditionally "boyish" style/interests.
- **Trans/Trans*:** Gender differs from sex assigned at birth (includes nonbinary identities).



WWW.STUDMODELPROJECT.COM

ATLANTA | NEW YORK | LOS ANGELES
LONDON | CAPE TOWN

Info@studmodelproject.com • +1 (470) 231-7171
8735 Dunwoody PL, Atlanta, GA 30350-2995